



Air Preparation

Lockout Valve Series

Application

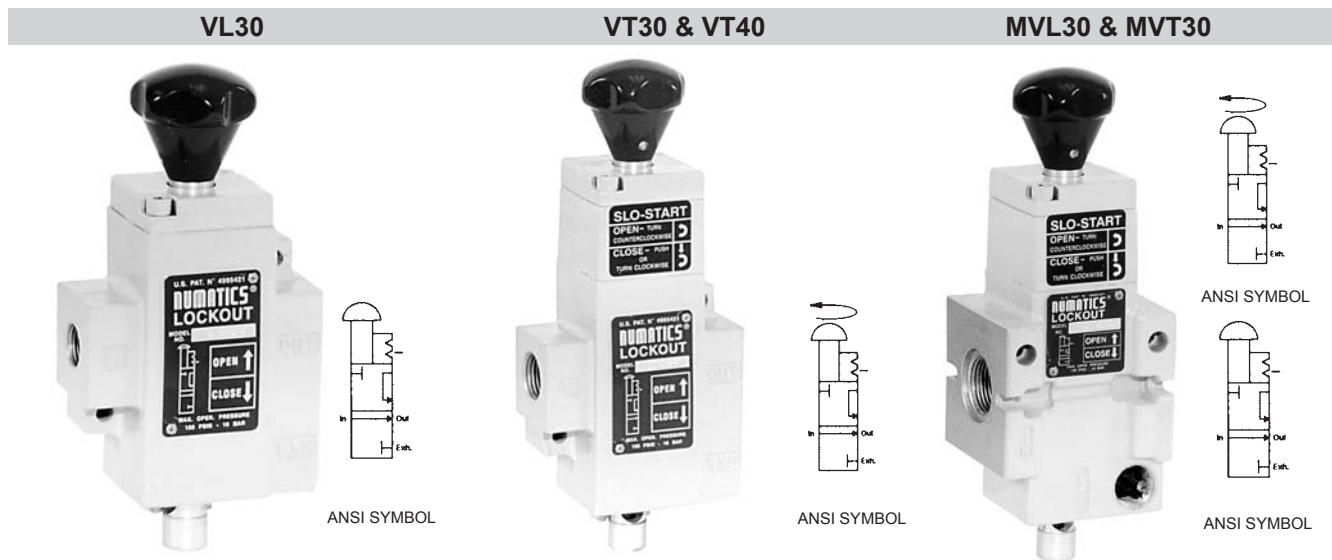
The Lockout Series Valves are 2-position, 3-way valve that exhausts downstream air when shifted to the closed position. Colored bright yellow with a red knob, it is easily distinguished from other air preparation products. It can be locked in the closed position with a padlock. This helps prevent unauthorized pressurization of an air system during service of maintenance operations.

Note: Units should be installed downstream of filtration equipment to avoid damage from backflow.

Order Code: (example)

VT40	G	06	A Y
Serie	Thread	Port Size	Options
VL30 = Manual Lockout Valve	G = G thread	03 = 3/8 (VL30 & VT30 series)	A = Metal muffler
VT30 = Manual Lockout Soft Start Valve	— = NPTF thread	04 = 1/2 (VL30; VT30 series)	B = Scissor lockout
VT40 = Manual Lockout Soft Start Valve		06 = 3/4 (all series)	H = Pressure max. 17 bar
MVL30 = Manual Lockout Valve compatible to FLEXiBLOK® 32 series in 3/4		08 = 1 (VT40 series)	S = Silencer (hexagonal collar)
MVT30 = Manual Lockout Soft Start Valve compatible to FLEXiBLOK® 32 series in 3/4		10 = 1 1/4 (VT40 series)	
		12 = 1 1/2 (VT40 series)	

NOTE: If the valve is ordered without options the Y is set directly to the previous order no. (Beispiel: VT40G06Y)



Features

- High exhaust capability
- Detented spool
- Low-friction startup
- Meets OSHA specifications
- Surface mountable

Features

- Slow start-up
- High exhaust capability
- Detented spool
- Low-friction seals
- Meets OSHA specifications
- Surface mountable

Features

- High exhaust capability
- Detented spool
- Low-friction startup
- Meets OSHA specifications
- Modular adaptable to Numatics FLEXiBLOK® 32 3/4 Series

Order example: **VT40G06A**

This is a manual Lockout Soft Start Valve. Port sizes are G 3/4.

It is equipped with a metal muffler.



Air Preparation

Lockout Valve Series

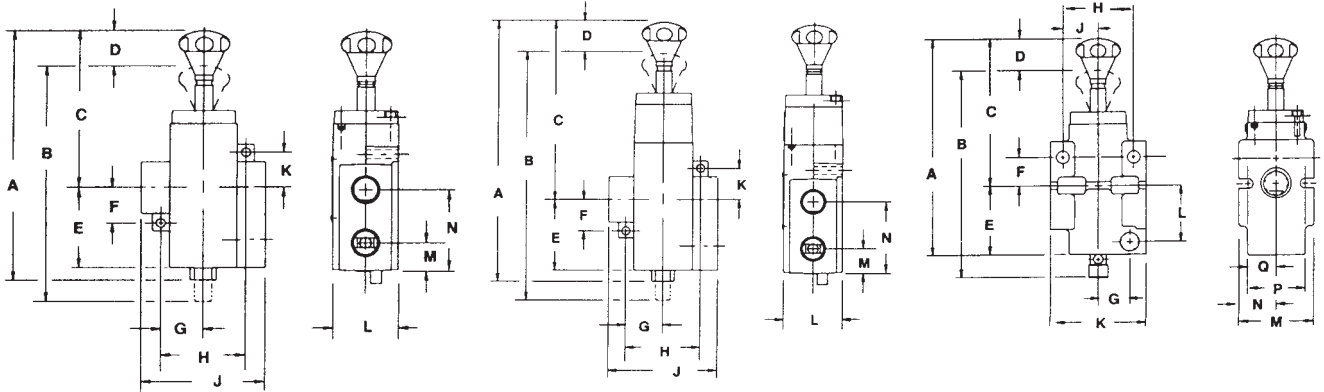
Technical Data

Order Code	Port Size	Exhaust Port	Flow C_v	Exhaust C_v	Temperature Range [°C]	Max. Pressure [bar]
VL30G03Y	3/8	3/8	4.8	3.7	4 to 50	10
VL30G04Y	1/2	1/2	6.8	5.2	4 to 50	10
VL30G06Y	3/4	3/4	8.5	7.5	4 to 50	10
VT30G03Y	3/8	3/8	4.8	3.7	4 to 50	10
VT30G04Y	1/2	1/2	6.8	5.2	4 to 50	10
VT30G06Y	3/4	3/4	8.5	7.5	4 to 50	10
VT40G03Y	3/8	3/8	13.5	11.0	4 to 50	10
VT40G08Y	1	1	18.2	14.9	4 to 50	10
VT40G10Y	1 1/4	1	19.1	14.9	4 to 50	10
VT40G12Y	1 1/2	1	20.3	16.3	4 to 50	10
MVL30G06Y	3/4	1/2	4.8	3.7	4 to 50	10
MVT30G06Y	3/4	1/2	6.8	5.2	4 to 50	10

Valve Series VL30

Valve Series VT30 & VT40

Valve Series MVL30 & MVT30



Dimensions [mm]

Series	A	B	C	D	E	F	G	H	J	K	L	M	N	P	Weight appr. [kg]
VL30	204.2	191.5	131.1	24.3	60.5	28.6	33.3	66.6	95.5	28.6	50.8	19.0	60.5	—	0.900
VT30	237.7	225.0	164.6	24.3	60.5	28.6	33.3	66.6	95.5	28.6	50.8	19.0	60.5	—	1.100
VT40	290.8	278.6	198.6	33.0	79.5	38.1	41.3	82.6	120.9	38.1	63.5	27.7	79.5	—	2.270
MVL30	191.5	131.0	24.4	21.6	60.5	81.3	26.9	63.5	31.8	50.8	47.2	68.0	34.0	25.4	0.900
MVT30	225.0	164.6	24.4	21.6	60.5	81.3	26.9	63.5	31.8	50.8	47.2	68.0	34.0	25.4	2.000

Accessories for Manual Lockout Valve

M5MB
Metal Muffler

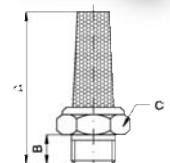
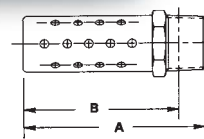


SE75S
Silencer with
Hexagonal Collar



Muffler

Order Code	Port Size	A mm	B mm	C SW	Flow at 6,2 bar NI/min	Application
M5MB	G 3/4	80.0	71.0	27	15,850	for Manual Lockout Valve
SE75S	G 3/4	53.0	13.0	30	—	for Manual Lockout Valve



Repair Kits

Order Code	Series
126-323	VL30, VT30 & MVL30
126-324	VT40

Scissor Lockout

Order Code	Application
VB1	for Manual Lockout Valve



Subject to change without notice. Not liable for printing errors.

Air Preparation